

- Designed for Seoul Semiconductor P3 and P4 series of white and monochromate LEDs
- Lensmaterial optical grade PMMA with high UV and temperature resistance (min 105°C)
- Sub lens available for medium light distribution, preassembled to main lens
- High optical efficiency, >85%
- No lens holder. Fastening to heat sink with an adhesive tape
- Diameter 50mm (MR16)
- Mechanical CAD models available upon request

LENS TYPES

Ordering Code	Description	FWHM Angle P3 or P4
NMO-LNB3-P3/P4H1	TRIPLE SPOT	±5°
NMO-LMB3-P3/P4H1 *	TRIPLE MEDIUM	±8°
NMO-LWB3-P3/P4H1	TRIPLE WIDE	±11°

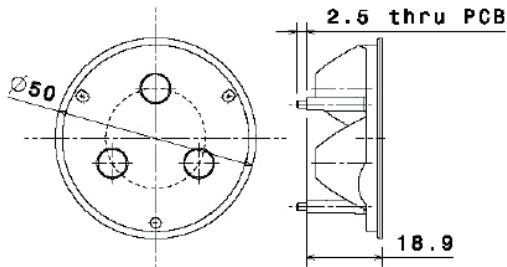
*) includes NMO-LNB3-P3H1 and a preassembled sub lens with a micro optics pattern.

Please note that we only recommend to use NMO-LNB3-P3/P4H1 for colored LEDs. For white LEDs, we recommend to use NMO-LMB3-P3/P4H1 or NMO-LWB3-P3/P4H1, to get a beautiful, even color distribution.

NMO-LXB3-P3/P4H1

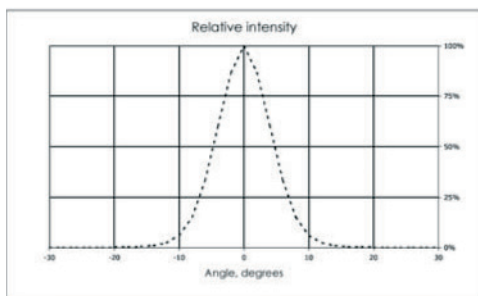
NMO TRIPLE LENSES FOR SSC P3 or P4

DIMENSIONS

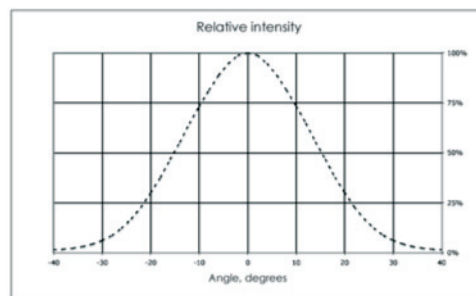


MESUREMENT DATA & PHOTOGRAPHS

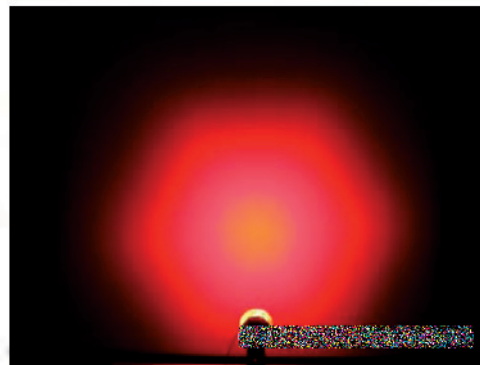
NMO-LNB3-P3/P4H1



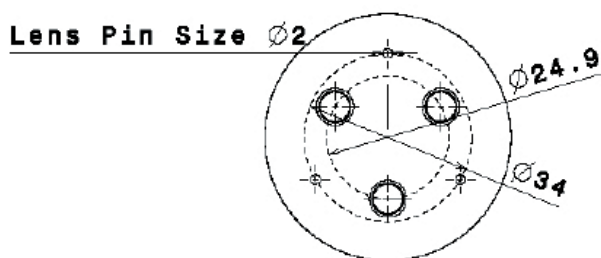
NMO-LMB3-P3/P4H1



NMO-LWB3-P3/P4H1



PCB LAYOUT



NOTE: 120° between each 2 lenses and each 2 lens pins