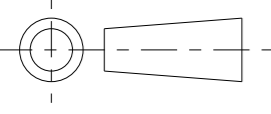


# CUSTOMER DRAWING

©2010 CTP-COIL  
ALL DIMENSIONS IN mm

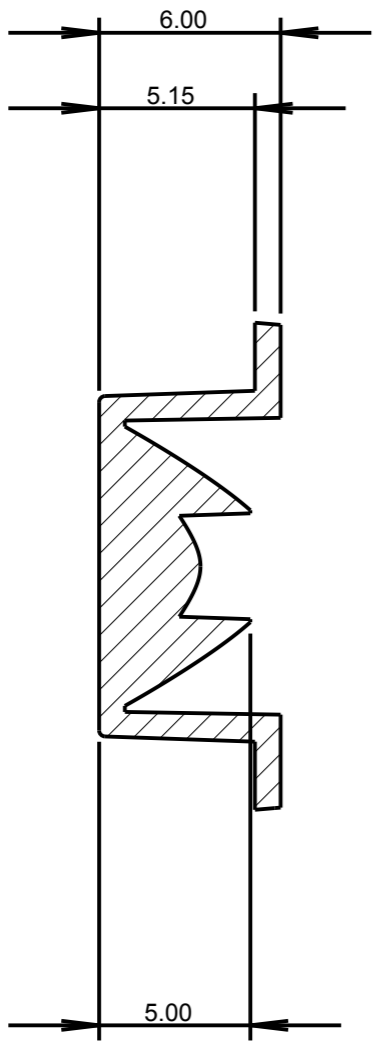
ISS.	DATE	E.C.N.	DESCRIPTION
1	12-Nov-10		FIRST ISSUE
2	23-Mar-11	03/11/1293	ADD RECESS DIMENSION & GENERAL INFO



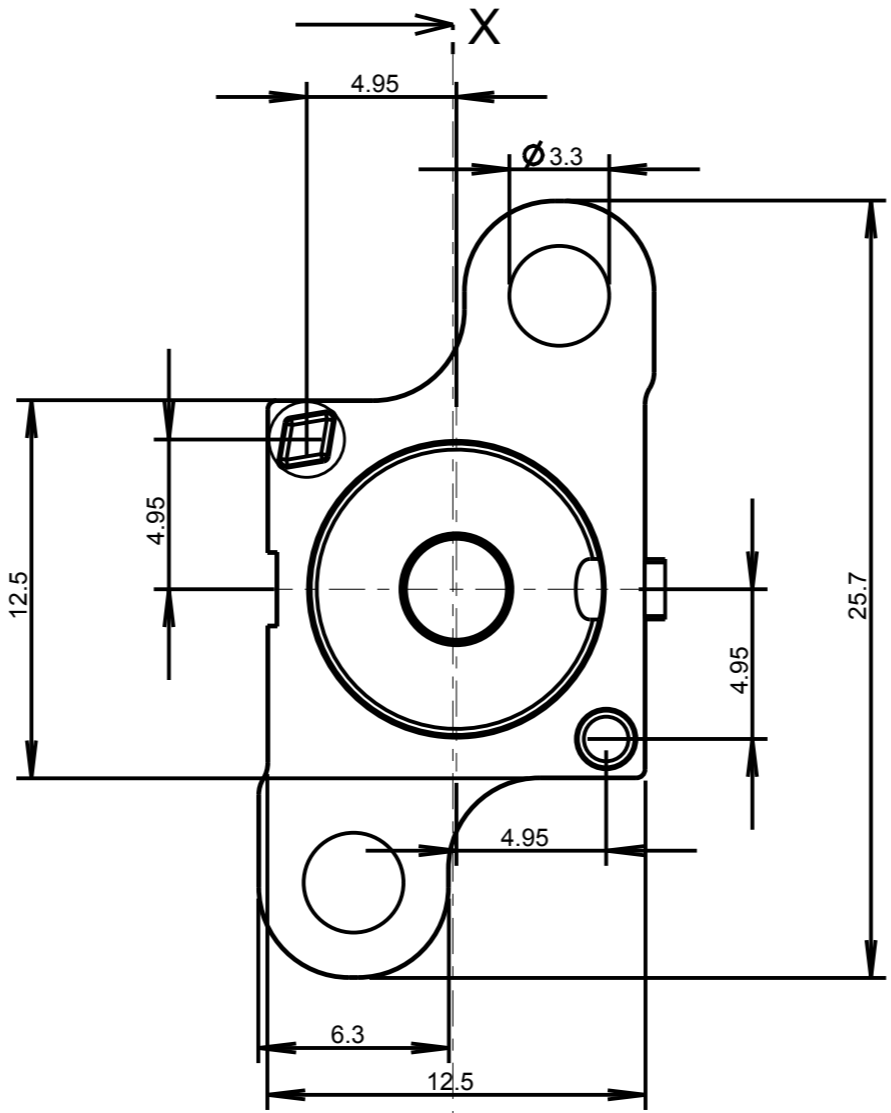
GENERAL VIEW



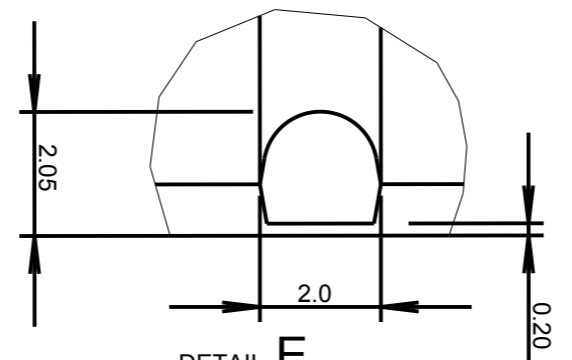
SCALE 1:1



SECTION X-X



SECTION X-X



DETAIL E  
SCALE 8:1

SEE DETAIL E



CARCLO TECHNICAL PLASTICS (SLOUGH)  
103 BUCKINGHAM AVE, SLOUGH  
SL1 4PF, ENGLAND  
TEL: +44 1753 575011 FAX: +44 1753 811359  
email: design@carclo-optics.com

GENERAL TOLERANCES (UNLESS STATED)

LINEAR	ANGULAR
X +/- 0.25	X +/- 1°
X.X +/- 0.1	X.X +/- 0.5°
X.XX +/- 0.05	X.XX +/- 0.1°

CUSTOMER  
CARCLO

TITLE  
10mm IP66 SPOT  
- with Location Pins & Flange

DRAWN BB DATE 12-Nov-10

CHK'D AB DATE 25-Mar-11

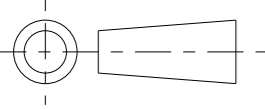
APP'D BB DATE 25-Mar-11

SCALE 4:1 CARCLO PART No. 12079

SIZE A3 CARCLO DRG. No. 60651 SHEET 1 OF 2

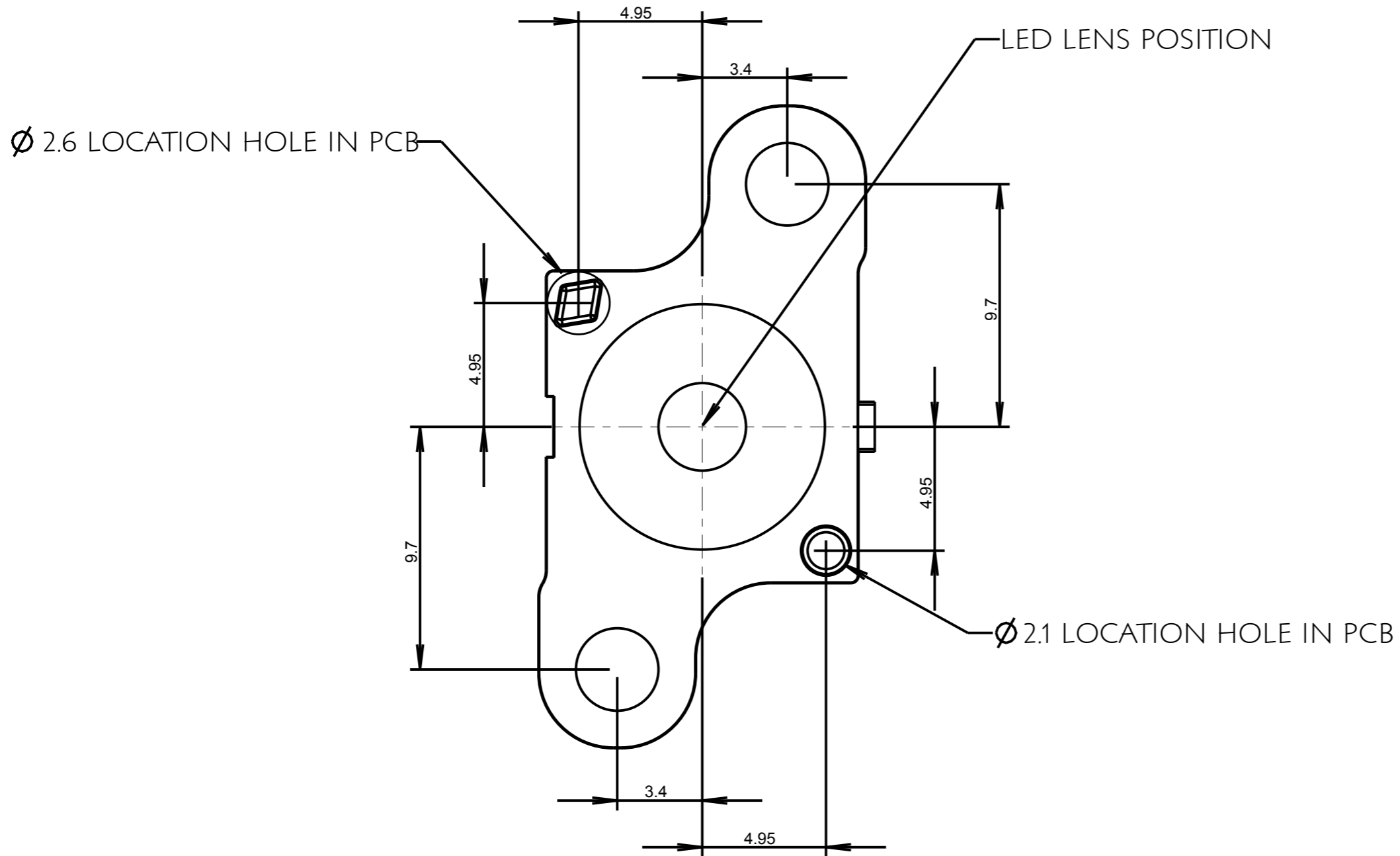
NOTES:

- MATERIAL - UV STABILISED CLEAR POLYCARBONATE
- INCLUSIONS SPECIFIED TO BS ISO 10110.



©2010 CTP-COIL  
ALL DIMENSIONS IN mm

# PCB GLUE PAD AND ALIGNMENT HOLE LAYOUT DIMENSIONS



ISS.	DATE	E.C.N.	DESCRIPTION
1	12-Nov-10		FIRST ISSUE
2	23-Mar-11	03/11/1293	ADD RECESS DIMENSIONS & GENERAL INFO



**CARCLO TECHNICAL PLASTICS (SLOUGH)**  
103 BUCKINGHAM AVE, SLOUGH  
SL1 4PF, ENGLAND  
TEL: +44 1753 575011 FAX: +44 1753 811359  
email: design@carclo-optics.com

GENERAL TOLERANCES (UNLESS STATED)

LINEAR	ANGULAR
X +/- 0.25	X +/- 1°
X.X +/- 0.1	X.X +/- 0.5°
X.XX +/- 0.05	X.XX +/- 0.1°

CUSTOMER  
**CARCLO**

TITLE  
**10mm IP66 SPOT  
- with Location Pins & Flange**

DRAWN BB DATE 12-Nov-10

CHK'D AB DATE 25-Mar-11

APP'D BB DATE 25-Mar-11

SCALE 5:1 CARCLO PART No. 12079

SIZE A3 CARCLO DRG. No. 60651 SHEET 2 OF 2