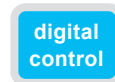
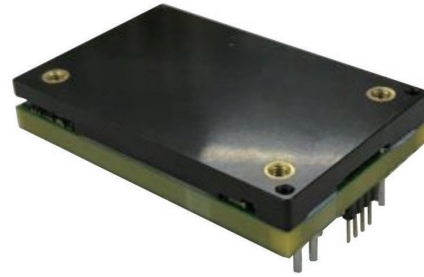


Q54SJ Series

FEATURES

Electrical

- Efficiency up to 97.6%
- OCP, Input UVP/OVP, OTP
- Remote ON/OFF
- Pre-bias startup
- No minimum load required
- Parallel Operation with Direct Output Connection
- PMbus Communication
- Black Box for fault logging
- Online upgrade firmware by the system processor without being turned off
- 707Vdc isolation



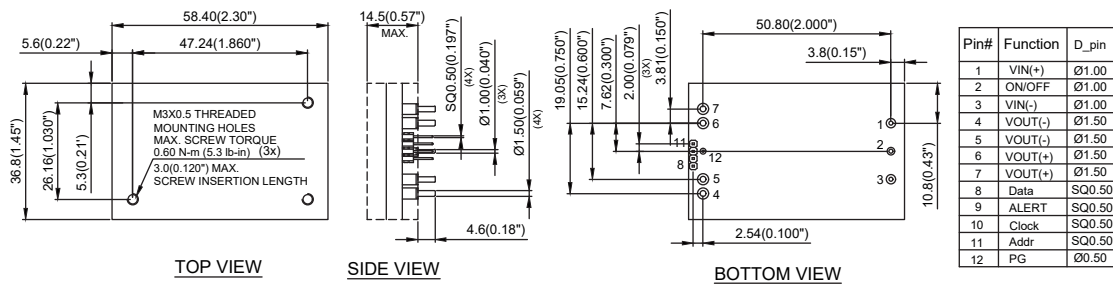
Safety & Certificate

- IEC/EN/UL/CSA 62368-1 (for selective models)
- IEC/EN/UL/CSA 60950-1

SPECIFICATIONS

Part Number	Input Voltage	Output Voltage	Vo trim range	Output Current	Output Power	Efficiency	Isolation Voltage	Size (LxWxH) with heat spreader
Q54SJ12058	40~60V	12.2V	-	57.4A	700W	96.4%	800V	57.9x36.8x12 mm
Q54SJ10892	40~60V	10.8V	-	92A	1000W	97.6%	707V	58.4x36.8x14.5 mm
Q54SJ108A2	40~60V	10.7V	-	121A	1300W	97.5%	707V	58.4x36.8x14.5 mm

MECHANICAL DRAWING



(For Q54SJ108A2NCDH only, please refer to datasheet for the other models)

PART NUMBERING SYSTEM

Q	54	S	J	108	92	N	C	D	H
Form Factor	Input Voltage	Number of Outputs	Product Series	Output Voltage	Output Current	ON/OFF Logic	Pin Length	Pin Assignment	Option Code
Q - 1/4 Brick	54 - 40~60V	S - Single	J - Family Name	108 - 10.8V 120 - 12.2V	58 - 58A 92 - 92A A2 - 121A	N - Negative P - Positive	C - 0.180" K - 0.110" N - 0.145" R - 0.170"	D - With PMbus Pins A - Without PMbus Pins P - With PMbus Pins & for PIH process	A - Standard Functions H - With heat spreader