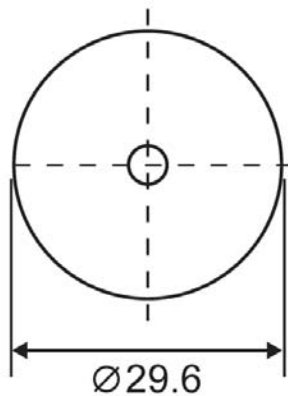


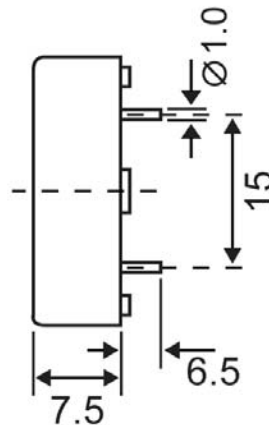
External Drive Piezo Transducer

Abmessungen / Dimensions

Frontansicht / Top View



Seitenansicht/ Side View



Ref. no.: CT2222
Special Description : equivalent to Kingstate part no. KPE-130

Abmessungen in mm / all dimensions are in mm

Technische Daten

Model Nr.	NPT-3010
Schalldruckpegel	90dBA min. [10V p-p Rechteckschwingung, 10cm, 3000Hz]
Kapazität	25000 pF +/- 30% bei 120Hz
Max. Eingangsspannung	30V p-p
Max. Nennstrom	5 mA
Betriebstemperatur	[°C] -20 ~ +70
Terminal	Pin
Material	PBT
Farbe	Schwarz
Gewicht	[g] 4

Electrical Specifications

Model No.	NPT-3010
Sound Pressure Level	90dBA min. [10V p-p Square Wave, 10cm, 3000Hz]
Capacitance	25000 pF +/- 30% at 120Hz
Max. Input Voltage	30V p-p
Max. Rated Current	5 mA
Operating Temperature	[°C] -20 ~ +70
Terminal	Pin
Housing Material	PBT
Housing Colour	Black
Weight	[g] 4