

Lighting

Seoul Semiconductor

Essential criteria

As a long established and owner-operated company, we always act according to the features reliability and liability, honesty and transparency as well as flexibility and discretion. Customer satisfaction confidence and commercial added value are basis for successful cooperation.

Reliable and strong partnership

We put the strength in working together exclusively with well-respected and leading manufacturers and suppliers. We achieve confidence and consistency in the market for more than 65 years. We do implement your demand on product quality and availability.

All-over processes and significant quality

The certification according to DIN EN ISO 9001:2008 proves the continuous representation of our processes. All procedures and workflows are location and department-overall recorded. This guarantees you, as our valued customer a maximum of safety and transparency in the complete process chain.

High advisory skills and solution

We confirm the confidence of our customers by fulfilling and exceeding their expectations. Our competence of individual consulting and target-oriented solutions are reflected in our custom-fit products. Have a look by yourself!

SOLUTION
PARTNER



Market knowledge from A to Z

Besides our specialized product portfolio we distinguish ourselves with profound branch knowledge. We use this know-how in order to give an optimum of product support. You can always rely on our extensive technical expertise from A like Acrich High Voltage Technology to Z like Zhaga LED modules. Our experts are always beyond one's nose and give you full support during your complete project realization and do also consider alternative solution approaches, if necessary.

Moving ahead with thoughtful steps

For more than 65 years we have been one of the leading design-in distributors for electronic components and systems. Hardly any other company in the industry can draw on such depth of experience. Our core competence lies in optoelectronics. In the areas of electromechanics, power supply, Hi-Rel, alarm & acoustics as well as RFID and industrial storage solutions, we always find the perfect solution for your specific requirements.



SEOUL SEMICONDUCTOR

Seoul Semiconductor Inc. (SSC) is one of the world's leading LED manufacturers. The company is headquartered in Seoul, South Korea. For more than 25 years, SSC has been engaged in the following business activities with the development and production of light emitting diodes. During this period a number of new innovative products have been developed. All products are protected by own patents or licenses. The product range includes all common standard designs, with SSC focusing on "LEDs for lighting applications" for all LED series. This means that white LEDs in particular are available in high quality. In addition to maximum efficiency, SSC also focuses on quality features such as colour temperature conformity and colour rendering factor (CRI) - as underlined by the latest LED series. In order to continue to meet both customer demands and our own self-image of quality, regular investments in research and development amount to at least 10 percent of annual sales. At SSC, however, further development is expressly limited to developing LEDs for the requirements of the future. There are no efforts to open up further fields of activity in addition to the core areas of chip manufacturing and LED packaging. The completed LED products such as LED luminaires or LED light sources are still in the sole hands of external companies. SSC will not enter this competition. This clear orientation continues to make SSC the ideal partner for future-proof LED projects.



Patent Portfolio

With more than 12,000 patents, SSC covers a broad portfolio of chip and manufacturing technologies and provides security for its products used in applications worldwide. In order to promote fair competition in the market, SSC has actively contributed to legally protecting its ideas against others.



The right product is not shown? This is just a selection from our portfolio!

Acrich MJT

Multi Junction Technology



Think small on a large scale. Acrich can be operated directly with AC mains voltage (50 / 60Hz). which requires no additional control gear – the LED life time is as well the system life time. In addition. the Acrich LEDs have a high overall efficiency. Available in operating voltages 50V / 100V / 110V / 220V and 230V.



MJT3030

Size: 3.0mm x 3.0mm x 0.6mm
Lens: Flat

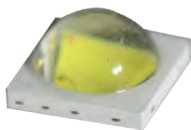
Part No.	Package [mm]	U _F [VDC]	I _F [mA]	Flux [lm]	Color temp. [K]	Viewing angle [°]	CRI
SAW9C72B	3.0 x 3.0 x 0.6	22.5	40	103.2	2,600 – 3,700	120	> 90
SAW8CF2B	3.0 x 3.0 x 0.6	46.5	20	120	2,600 – 7,000	120	> 80
SAW8C72B	3.0 x 3.0 x 0.6	22.5	40	115.1	2,600 – 3,700	120	> 80
SAW9C22B-NZ	3.0 x 3.0 x 0.6	6.2	150	120	2,600 – 7,000	120	> 90
SAW8C22B-IZ	3.0 x 3.0 x 0.6	6.2	150	138	2,600 – 7,000	120	> 80
SAW8C22B-NZ	3.0 x 3.0 x 0.6	6.2	150	139	2,600 – 7,000	120	> 80
SAW9CF2B	3.0 x 3.0 x 0.6	46.5	20	109	2,600 – 3,700	120	> 90
SAW7C22B-IZ	3.0 x 3.0 x 0.6	6.2	150	153	2,500 – 7,000	120	> 70



MJT3528

Size: 3.5mm x 2.8mm x 0.7mm
Lens: Flat
Special feature : In common standard 3528 housing

Part No.	Package [mm]	U _F [VDC]	I _F [mA]	Flux [lm]	Color temp. [K]	Viewing angle [°]	CRI
SAW9A32E	3.5 x 2.8 x 0.7	9.6	100	105	2,600 – 7,000	120	> 90
SAW8A32E-E1	3.5 x 2.8 x 0.7	9.4	100	130	2,600 – 7,000	120	> 80
SAW8A32E	3.5 x 2.8 x 0.7	9.5	100	115	2,600 – 7,000	120	> 80
SAW8A62E	3.5 x 2.8 x 0.7	18.8	50	130	2,600 – 7,000	120	> 80
SAW9A62E	3.5 x 2.8 x 0.7	18.8	50	110	2,600 – 7,000	120	> 90



MJT4040

Size: 4.0mm x 4.0mm x 2.2mm
Lens: Flat

Part No.	Package [mm]	U _F [VDC]	I _F [mA]	Flux [lm]	Color temp. [K]	Viewing angle [°]	CRI
SAW09D0A	4.0 x 4.0 x 2.2	6	200	215	4,700 – 7,000	120	> 70
SAW89D0A	4.0 x 4.0 x 2.2	6	200	186	4,700 – 7,000	120	> 80



MJT5050

Size: 5.0mm x 5.0mm x 0.7mm
 Lens: Flat

Part No.	Package [mm]	U _F [VDC]	I _F [mA]	Flux [lm]	Color temp. [K]	Viewing angle [°]	CRI
SAW0L60A	5.0 x 5.0 x 0.7	16.5	60	200	2,600 – 7,000	120	> 70
SAW8L60A	5.0 x 5.0 x 0.7	16.5	60	187	2,600 – 7,000	120	> 80

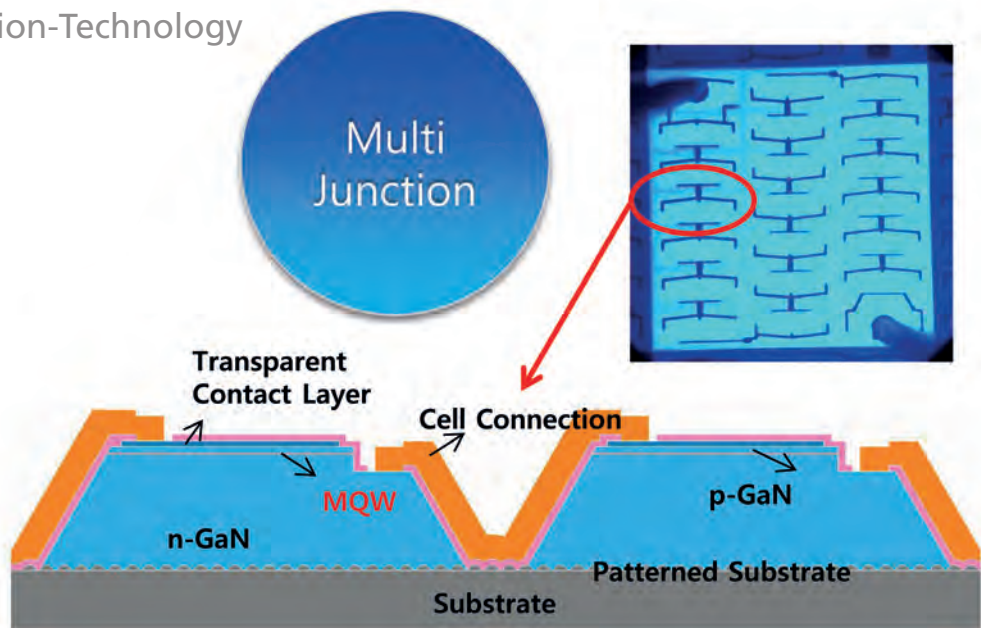


MJT5630

Size: 5.6mm x 3.0mm x 0.65mm
 Lens: Flat
 SepECIAL feature: In common standard 5630 housing

Part No.	Package [mm]	U _F [VDC]	I _F [mA]	Flux [lm]	Color temp. [K]	Viewing angle [°]	CRI
SAW7Q24D	5.6 x 3.0 x 0.65	6.0	32	36.4	2,600 – 7,000	120	> 70
SAW8Q24D	5.6 x 3.0 x 0.65	6.0	32	36	2,600 – 7,000	120	> 80

Multi-Junction-Technology

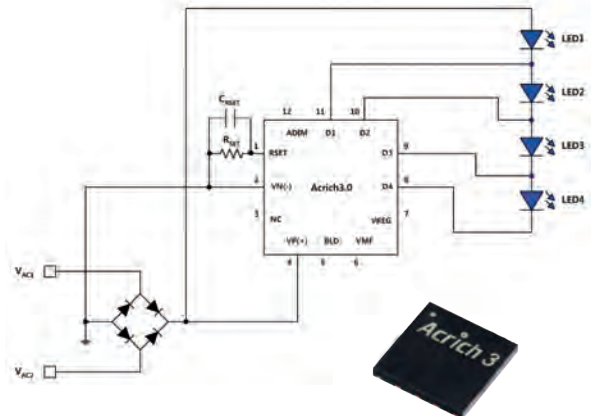


Acrich3

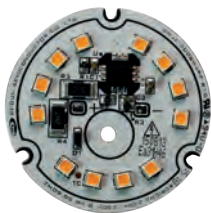
Simplify your smart lighting system



- Possibility of direct analogue dimming
- Harmonious dimming curve at Triac dimming
- Improved overtemperature protection
- Integrated AC voltage compensation
- Adjustable total power up to a maximum of 16W per IC
- Supply of control and regulation elements by the IC to provided analogue voltage



Acrich3-IC: 6mm x 6mm



8W

Size: Ø 46mm

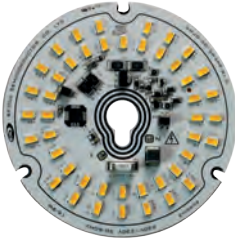
Part No.	Package [mm]	U _F [VAC]	P [W]	Flux [lm]	Color Temp. [K]	Viewing angle [°]	CRI	Additional function
SMJE-3D08W4PD	46	220	8.5	830	2,600 – 6,000	120	80	Triac Dim
SMJE-3D08W4PE	46	220	8.5	670	2,600 – 6,000	120	90	Triac Dim
SMJE-3V08W4PD	46	230	8.5	830	2,600 – 6,000	120	80	Compatible with Acrich2.0
SMJE-3V08W4PE	46	230	8.5	670	2,600 – 6,000	120	90	Compatible with Acrich2.0



12W

Size: Ø 78mm | Ø 50mm | Ø 46mm

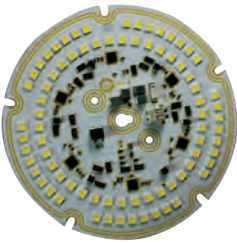
Part No.	Package [mm]	U _F [VAC]	P [W]	Flux [lm]	Color Temp. [K]	Viewing angle [°]	CRI	Additional function
SMJE-3D12W4PD	46	220	12.5	1.130	2,600 – 6,000	120	80	Triac Dim
SMJE-3D12W4PE	46	220	12.5	910	2,600 – 6,000	120	90	Triac Dim
SMJE-3V12W4PM	50	220	12.5	1.130	2,600 – 6,000	120	80	Compatible with Acrich2.0
SMJE-3V12W4PN	50	220	12.5	910	2,600 – 6,000	120	90	Compatible with Acrich2.0



17W

Size: Ø100mm | Ø 78mm | Ø 70mm

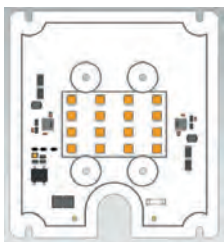
Part No.	Package [mm]	U _F [VAC]	P [W]	Flux [lm]	Color Temp. [K]	Viewing angle [°]	CRI	Additional function
SMJD-3D16W4P3	100	220	16.9	1,700	2,600 – 6,000	120	80	Triac Dim
SMJD-3D16W4P8	100	220	16.9	1,500	2,600 – 6,000	120	90	Triac Dim
SMJD-3D16W4PD	70	220	16.6	1,600	2,600 – 6,000	120	80	Triac Dim
SMJD-3D16W4PE	70	220	16.6	1,350	2,600 – 6,000	120	90	Triac Dim
SMJD-3C16W4PD	70	220	16.6	1,600	2,600 – 6,000	120	80	Power Compensation
SMJD-3C16W4PE	70	220	16.6	1,350	2,600 – 6,000	120	90	Power Compensation
SMJD-3H16W4PD	78	220	16.6	1,650	2,600 – 6,000	120	80	Power Compensation. Flicker Free
SMJD-3H16W4PE	78	220	16.6	1,400	2,600 – 6,000	120	90	Power Compensation. Flicker Free
SMJD-3G16W4PD	78	220	16.6	1,650	2,600 – 6,000	120	80	Triac Dim. Flicker Free
SMJD-3G16W4PE	78	220	16.6	1,400	2,600 – 6,000	120	90	Triac Dim. Flicker Free
SMJD-3V16W4PD	70	220	16.6	1,600	2,600 – 6,000	120	80	Compatible with Acrich2.0
SMJD-3V16W4PE	70	220	16.6	1,350	2,600 – 6,000	120	90	Compatible with Acrich2.0



High Bay

Size: Ø 145mm | Ø150mm

Part No.	Package [mm]	U _F [VAC]	P [W]	Flux [lm]	Color Temp. [K]	Viewing angle [°]	CRI	Additional function
SMJQ-3CA5W4P7	150	230	105	11,500	3,700 – 6,000	120	70	OTP Power Compensation
SMJQ-3C95W4P7	145	230	95	10,300	3,700 – 6,000	120	70	OTP Power Compensation



Flood Light

Size: 110mm x 120mm | 150mm x 120mm

Part No.	Package [mm]	U _F [VAC]	P [W]	Flux [lm]	Color Temp. [K]	Viewing angle [°]	CRI	Additional function
SMJQ-3C30W4P7	110 x 120	230	30	3.000	3,700 – 6,000	120	80	Power Compensation
SMJQ-3C50W4P7	110 x 120	230	50	4.800	3,700 – 6,000	120	70	Power Compensation
SMJQ-3C80W4WA	150 x 120	230	80	8.000	3,700 – 6,000	120	70	Power Compensation

The right product is not shown? This is just a selection from our portfolio!

Acrich4

Simplify your smart lighting system



The NanoDriver- and MicroDriver series are based on the latest Acrich technology and include their extremely small package dimensions to the smallest LED drivers in the market.

The flicker-free drivers are TRIAC-dimmable and have a power factor of > 0.9 . with system efficiency $> 85\%$.

MicroDriver



- Size: 46.2mm x 28.0mm x 20.0mm
- Very compact Package
- Almost flicker free
- Triac dimmable

Part No.	Package [mm]	Input Voltage [VAC]	Output P [W]	LED Current [mA]
SMJR-M-E-053-NOR	46.2 x 28 x 20	230	10	53
SMJR-M-E-066-NOR	46.2 x 28 x 20	230	12.5	66
SMJR-M-F-080-NOR	46.2 x 28 x 20	230	15	80
SMJR-M-F-107-NOR	46.2 x 28 x 20	230	20	107
SMJR-M-F-128-NOR	46.2 x 28 x 20	230	24	128

NanoDriver



- Size: 13.5mm x 13.5mm x 1.42mm
- Very compact package
- System efficiency up to 150lm/W
- Almost flickerfree
- Triac dimmable

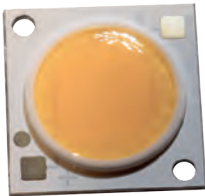
Part No.	Package [mm]	Input Voltage [VAC]	Output P [W]	LED Current [mA]
SMJR-N-2-16	13.5 x 13.5 x 1.42	230	16	adjustable
SMJR-N-2-24	13.5 x 13.5 x 1.42	230	24	adjustable

Acrich MJT COB

Multijunction technology with high reliability

These novel COBs are based on the highly efficient multi-junction technology (MJT) and are characterized by a high reliability. This is required by the greatly reduced number of bond connections achieved. In addition, the metal substrate used allows an excellent thermal connection.

Due to the large number of different models, the realisation of innovative and application-optimized LED solutions can do.



MJT COB

Size: 13.5mm x 13.5mm to 38.0mm x 38.0mm

Part No.	Package [mm]	U_f [VDC]	I_f [mA]	I_f max [mA]	Flux [lm]	Color Temp.. [K]	Viewing angle [°]	CRI
SAW80661A	13.5 x 13.5	34.8	180	450	952	2,600 – 7,000	118	> 80
SAW81062A	13.5 x 13.5	33.9	270	675	1,522	2,600 – 7,000	118	> 80
SAW81063A	13.5 x 13.5	33.6	360	900	2,000	2,600 – 7,000	118	> 80
SAW81564A	19.0 x 19.0	33.9	540	1,350	3,118	2,600 – 7,000	118	> 80
SAW81565A	19.0 x 19.0	34.1	720	1,800	4,075	2,600 – 7,000	118	> 80
SAW81566A	19.0 x 19.0	34.2	900	2,250	5,000	2,600 – 7,000	118	> 80
SAW82296A	28.0 x 28.0	50.5	740	1,850	6,505	2,600 – 7,000	118	> 80
SAW82298A	28.0 x 28.0	51.0	1,100	2,750	9,173	2,600 – 7,000	118	> 80
SAW822AAA	28.0 x 28.0	57.0	1,500	3,750	13,645	2,600 – 7,000	118	> 80
SAW833EAA	38.0 x 38.0	79.9	1,500	3,750	19,634	2,600 – 7,000	118	> 80
SAW833GCA	38.0 x 38.0	91.5	1,850	4,680	26,866	2,600 – 7,000	118	> 80
SAW90661A	13.5 x 13.5	34.8	180	450	796	2,600 – 4,200	118	> 90
SAW91062A	13.5 x 13.5	33.9	270	675	1,280	2,600 – 4,200	118	> 90
SAW91063A	13.5 x 13.5	33.6	360	900	1,677	2,600 – 4,200	118	> 90
SAW91564A	19.0 x 19.0	33.9	540	1,350	2,618	2,600 – 4,200	118	> 90
SAW91565A	19.0 x 19.0	34.1	720	1,800	3,425	2,600 – 4,200	118	> 90
SAW91566A	19.0 x 19.0	34.2	900	2,250	4,199	2,600 – 4,200	118	> 90
SAW92296A	28.0 x 28.0	50.5	740	1,850	5,462	2,600 – 4,200	118	> 90
SAW92298A	28.0 x 28.0	51.0	1,100	2,750	7,705	2,600 – 4,200	118	> 90
SAW922AAA	28.0 x 28.0	57.0	1,500	3,750	11,461	2,600 – 4,200	118	> 90
SAW933EAA	38.0 x 38.0	79.9	1,500	3,750	16,494	2,600 – 4,200	118	> 90
SAW933GCA	38.0 x 38.0	91.5	1,850	4,630	22,568	2,600 – 4,200	118	> 90

The right product is not shown? This is just a selection from our portfolio!

SunLike

Novel phosphor technology

SunLike has a unique combination of semiconductor chips and advanced phosphor technology. The spectrum of light almost identical to natural sunlight. Particularly noteworthy is that the previously emission peak in the blue wavelength range is omitted.

In addition, this innovative LED generation can be used to advantage wherever a drawn color rendering is needed. SunLike LEDs have a color rendering index of > 97.



COB

Size: 13.5mm x 13.5mm / 19.0mm x 19.0mm

Part No.	Package [mm]	U _F [VDC]	I _F [mA]	I _F max [mA]	Flux [lm]	Color Temp.. [K]	Viewing angle [°]	CRI
SAWS0661A	13.5 x 13.5	37.1	170	260	600	2,600 – 7,000	115	> 97
SAWS1063A	13.5 x 13.5	35.8	290	580	1.070	2,600 – 7,000	115	> 97
SAWS1564A	19.0 x 19.0	35	430	1.350	1.657	2,600 – 7,000	115	> 97
SAWS1566A	19.0 x 19.0	36.2	720	1.440	2.715	2,600 – 7,000	115	> 97

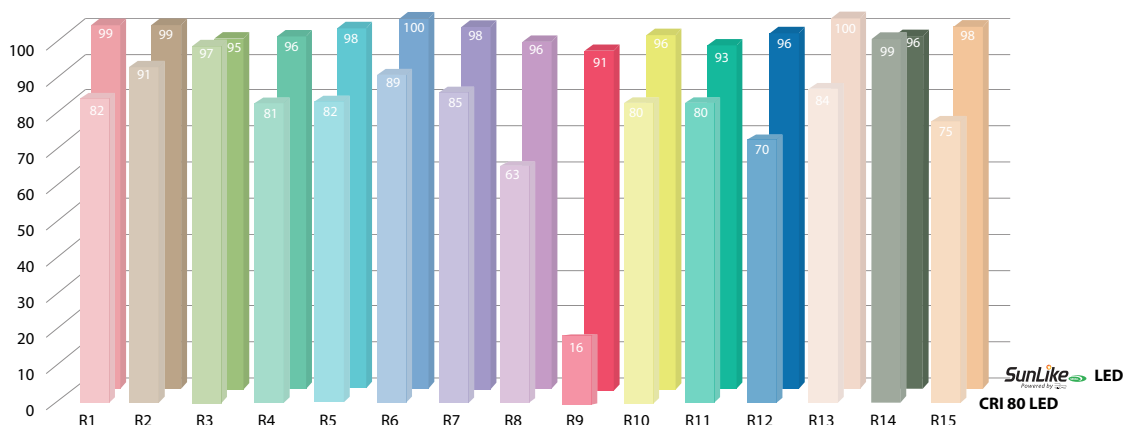


3030

Size: 3.0mm x 3.0mm x 0.6mm

Part No.	Package [mm]	U _F [VDC]	I _F [mA]	I _F max [mA]	Flux [lm]	Color Temp.. [K]	Viewing angle [°]	CRI
STW9C2PB-S	3.0 x 3.0 x 0.6	3.04	65	150	23	2,600 - 7,000	120	> 95

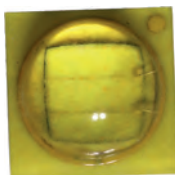
Comparing CRI 80 LED vs. Sunlike LED



Highpower LED

For compact and bright applications

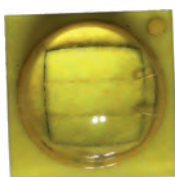
The high power SMD LEDs of the Z5M series are characterized by a very good temperature resistance and an extremely high life time forecast combined with an efficiency of > 160lm / W as well. Due to the compact dimensions and high light output of the SMD LEDs make them versatile in a wide variety usage of applications.



Z5-M2

Size: 3.5mm x 3.5mm x 2.0mm

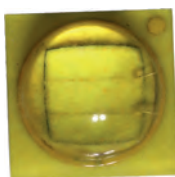
Part No.	Package [mm]	U _F [VDC]	I _F [mA]	I _{Fmax.} [mA]	Flux [lm]	Color temp. [K]	Viewing angle [°]	CRI
SZ5-M2-WW-C8	3.5 x 3.5 x 2.0	2.95	350	1,500	139	2,600 – 3,700	118.0	> 80
SZ5-M2-WW-00	3.5 x 3.5 x 2.0	2.95	350	1,500	150	2,600 – 3,700	118.0	> 70
SZ5-M2-WW-C9	3.5 x 3.5 x 2.0	2.95	350	1,500	105	2,600 – 3,700	118.0	> 90
SZ5-M2-W0-C8	3.5 x 3.5 x 2.0	2.95	350	1,500	150	4,700 – 8,200	118.0	> 80
SZ5-M2-WN-C8	3.5 x 3.5 x 2.0	2.95	350	1,500	144	3,700 – 4,700	118.0	> 80
SZ5-M2-WN-00	3.5 x 3.5 x 2.0	2.95	350	1,500	166	3,700 – 4,700	118.0	> 70
SZ5-M2-W0-00	3.5 x 3.5 x 2.0	2.95	350	1,500	168	4,700 – 7,000	118.0	> 70



Z5-M1

Size: 3.5mm x 3.5mm x 2.0mm

Part No.	Package [mm]	U _F [VDC]	I _F [mA]	I _{Fmax.} [mA]	Flux [lm]	Color temp. [K]	Viewing angle [°]	CRI
SZ5-M1-WW-C9	3.5 x 3.5 x 2.0	2.95	350	1,500	105	2,600 – 3,200	118.0	> 90
SZ5-M1-WW-C8	3.5 x 3.5 x 2.0	2.95	350	1,500	128	2,600 – 3,700	118.0	> 80
SZ5-M1-WW-00	3.5 x 3.5 x 2.0	2.95	350	1,500	148	2,600 – 3,200	118.0	> 70
SZ5-M1-WN-C8	3.5 x 3.5 x 2.0	2.95	350	1,500	142	3,700 – 4,700	118.0	> 80
SZ5-M1-WN-00	3.5 x 3.5 x 2.0	2.95	350	1,500	156	3,700 – 4,700	118.0	> 70
SZ5-M1-W0-00	3.5 x 3.5 x 2.0	2.95	350	1,500	158	4,700 – 7,000	118.0	> 70
SZ5-M1-W0-C8	3.5 x 3.5 x 2.0	2.95	350	1,500	150	4,700 – 7,000	118.0	> 80



Z5-Horticulture

Size: 3.5mm x 3.5mm x 1.9mm

Part No.	Package [mm]	U _F [VDC]	I _F [mA]	I _{Fmax.} [mA]	Radiant power [mW]	Color Temp. [nm]	Viewing angle [°]
SZB05A0B	3.5 x 3.5 x 1.9	2.95	350	1,200	660	455	120
SZDR5A0B	3.5 x 3.5 x 1.9	2.1	350	700	410	657	120
SZFR5A0B	3.5 x 3.5 x 1.9	1.9	350	700	317	730	120
SZN05A0B	3.5 x 3.5 x 1.9	3.45	350	500	668	405	120

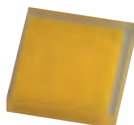
The right product is not shown? This is just a selection from our portfolio!

WICOP

New form factor with much smaller dimensions



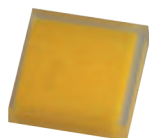
The WICOP series offers many advantages through its package-less design. It was designed for powerful high-end flux applications with a high operating current. It is very well suited for bundled light applications, such as spot lights, outdoor and automotive applications as well as high-performance flashlights.



Y11

Size: 1.1mm x 1.1mm x 0.4mm

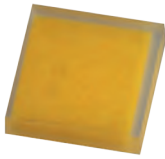
Part No.	Package [mm]	U _F [VDC]	I _F [mA]	I _{Fmax} [mA]	Flux [lm]	Color temp. [K]	Viewing angle [°]	CRI
SZ8-Y11-W0-C7-A	1.1 x 1.1 x 0.4	2.75	150	700	70	4,700 – 7,000	150	70
SZ8-Y11-W0-C8-A	1.1 x 1.1 x 0.4	2.75	150	700	66	4,700 – 7,000	150	80
SZ8-Y11-W0-C8-B	1.1 x 1.1 x 0.4	6.0	175	350	135	4,700 – 7,000	150	80
SZ8-Y11-WN-C7-A	1.1 x 1.1 x 0.4	2.75	150	700	70	3,700 – 4,700	150	70
SZ8-Y11-WN-C8-A	1.1 x 1.1 x 0.4	2.75	150	700	66	3,700 – 4,700	150	80
SZ8-Y11-WN-C8-B	1.1 x 1.1 x 0.4	6.0	175	350	135	3,700 – 4,700	150	80
SZ8-Y11-WW-C8-A	1.1 x 1.1 x 0.4	2.75	150	700	62	2,600 – 3,700	150	80
SZ8-Y11-WW-C8-B	1.1 x 1.1 x 0.4	6.0	175	350	124	2,600 – 3,700	150	80
SZ8-Y11-WW-C9-B	1.1 x 1.1 x 0.4	6.0	175	350	100	2,600 – 3,700	150	90
SZ8-Y11-WW-C9-C	1.1 x 1.1 x 0.4	8.7	115	230	100	2,600 – 3,700	150	90



Y15

Size: 1.4mm x 1.4mm x 0.4mm

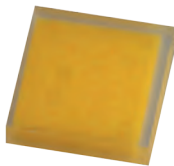
Part No.	Package [mm]	U _F [VDC]	I _F [mA]	I _{Fmax} [mA]	Flux [lm]	Color temp. [K]	Viewing angle [°]	CRI
SZ8-Y15-WW-C7	1.4 x 1.4 x 0.4	3.00	350	1.200	140	2,600 – 3,700	140	> 70
SZ8-Y15-WN-C7	1.4 x 1.4 x 0.4	3.00	350	1.200	160	3,700 – 4,700	140	> 70
SZ8-Y15-W0-C7	1.4 x 1.4 x 0.4	3.00	350	1.200	160	4,700 – 7,000	140	> 70
SZ8-Y15-WW-C8	1.4 x 1.4 x 0.4	3.00	350	1.200	135	2,600 – 3,700	140	> 80
SZ8-Y15-W0-C8	1.4 x 1.4 x 0.4	3.00	350	1.200	146	4,700 – 7,000	140	> 80
SZ8-Y15-WN-C8	1.4 x 1.4 x 0.4	3.00	350	1.200	140	3,700 – 4,700	140	> 80
SZ8-Y15-WW-C9	1.4 x 1.4 x 0.4	3.00	350	1.200	102	2,600 – 3,700	140	> 90
SZ8-Y15-WN-C9	1.4 x 1.4 x 0.4	3.00	350	1.200	125	3,700 – 4,700	140	> 90
SZ8-Y15-W0-C9	1.4 x 1.4 x 0.4	3.00	350	1.200	130	4,700 – 7,000	140	> 90



Y19

Size: 1.8mm x 1.8mm x 0.4mm

Part No.	Package [mm]	U_F [VDC]	I_F [mA]	I_{Fmax} [mA]	Flux [lm]	Color temp. [K]	Viewing angle [°]	CRI
SZ8-Y19-WW-C7	1.8 x 1.8 x 0.4	2.92	350	2,000	150	2,600 – 3,700	140	> 70
SZ8-Y19-WN-C7	1.8 x 1.8 x 0.4	2.92	350	2,000	175	3,700 – 4,700	140	> 70
SZ8-Y19-W0-C7	1.8 x 1.8 x 0.4	2.92	350	2,000	175	4,700 – 7,000	140	> 70
SZ8-Y19-WW-C8	1.8 x 1.8 x 0.4	2.92	350	2,000	145	2,600 – 3,700	140	> 80
SZ8-Y19-WN-C8	1.8 x 1.8 x 0.4	2.92	350	2,000	150	3,700 – 4,700	140	> 80
SZ8-Y19-W0-C8	1.8 x 1.8 x 0.4	2.92	350	2,000	156	4,700 – 7,000	140	> 80
SZ8-Y19-WW-C9	1.8 x 1.8 x 0.4	2.92	350	2,000	112	2,600 – 3,700	140	> 90
SZ8-Y19-WN-C9	1.8 x 1.8 x 0.4	2.92	350	2,000	135	3,700 – 4,700	140	> 90
SZ8-Y19-W0-C9	1.8 x 1.8 x 0.4	2.92	350	2,000	140	4,700 – 7,000	140	> 90

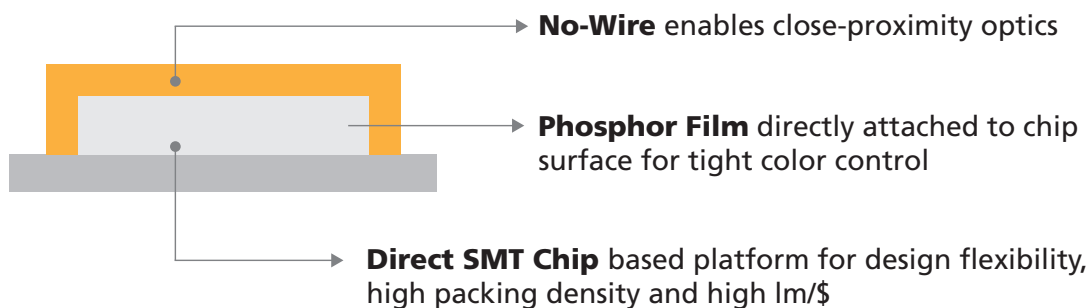


Y22

Size: 2.2mm x 2.2mm x 0.4mm
3.5mm x 3.5mm x 0.9mm

Part No.	Package [mm]	U_F [VDC]	I_F [mA]	I_{Fmax} [mA]	Flux [lm]	Color temp. [K]	Viewing angle [°]	CRI
SZ8-Y22-WW-C8-P	3.5 x 3.5 x 0.9	2.80	700	2,000	300	2,600 – 3,700	140	> 80
SZ8-Y22-WN-C7-P	3.5 x 3.5 x 0.9	2.80	700	2,000	358	3,700 – 4,700	140	> 70
SZ8-Y22-W0-C7-P	3.5 x 3.5 x 0.9	2.80	700	2,000	358	4,700 – 7,000	140	> 70
SZ8-Y22-WW-C8	2.2 x 2.2 x 0.4	2.80	700	2,000	300	2,600 – 3,700	140	> 80
SZ8-Y22-WN-C7	2.2 x 2.2 x 0.4	2.80	700	2,000	358	3,700 – 4,700	140	> 70
SZ8-Y22-W0-C7	2.2 x 2.2 x 0.4	2.80	700	2,000	358	4,700 – 7,000	140	> 70

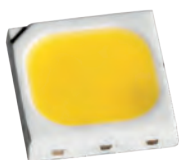
Structure WICOP2-LED



Midpower LED

Very high life time forecast | Extremely good "lumen-per-euro-factor"

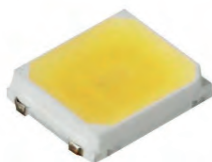
The series of midpower SMD LEDs are characterized by their very high efficiency. Values of $> 170\text{lm/W}$ are easily achieved. Also to be highlighted is the extremely good heat stability and the very high life time forecast. These properties make these light-emitting diodes to highly interesting alternatives for a wide range of lighting applications.



3030-series

Size: 3.0mm x 3.0mm
Lens: Flat

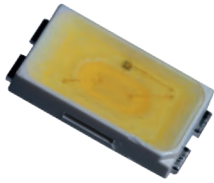
Part No.	U_F [VDC]	I_F [mA]	$I_{Fmax.}$ [mA]	Flux [lm]	luminous intensity [cd]	Color Temp. / Farbe [K]	Viewing angle [°]	CRI
STW8C1SB	2.81	65	400	33.8	10.5 – 10.9	2,600 – 7,000	120	> 80
STW9C2SB	6.00	100	200	89.9	27.3 – 29.5	2,600 – 7,000	120	> 90
S2-STW8C2SB	6.10	100	200	86.5	-	2,600 – 7,000	120	> 80
STW7C2SB	6.10	100	200	94.6	30.0 – 30.5	2,600 – 7,000	120	> 70
STW8C2SB	6.00	100	200	89.9	27.3 – 29.5	2,100 – 7,000	120	> 80
STW9C2PB-E1	2.75	65	400	29.5	9.0 – 9.7	2,600 – 7,000	120	> 90



3528-series

Size: 3.5mm x 2.8mm x 0.7mm
Lens: Flat

Part No.	U_F [VDC]	$65I_F$ [mA]	$I_{Fmax.}$ [mA]	Flux [lm]	luminous intensity [cd]	Color Temp. / Farbe [K]	Viewing angle [°]	CRI
STW9A12D	3.2	150	180	52.7	17.0	2,100 – 7,000	120	> 90
STW8A2PD	2.95	65	300	31.9	10.3	2,600 – 7,000	120	> 80
STW8A2SD	6.1	100	150	92.4	29.8	2,600 – 7,000	120	> 80
STW8A12D-E1	3.0	65	200	30.4	10.3	2,600 – 7,000	120	> 80
STW8A12D-E2	2.9	65	200	32.6	10.5	2,600 – 7,000	120	> 80
STW8A12D-E3	2.85	65	200	34.5	11.1	2,600 – 7,000	120	> 80
STW9A12D-E1	2.95	65	200	28.5	9.5	2,600 – 7,000	120	> 90
STW8A12D	3.2	150	180	58.9	18.2	2,600 – 7,000	120	> 80
STWHA12D-E1	2.9	65	200	24.8	7.9	2,600 – 5,300	120	> 95
STW8A12D-S1	2.95	65	180	30	9.5	2,600 – 7,000	120	> 80
STW8A2PD-S1	2.82	65	200	32	10.2	2,600 – 7,000	120	> 80
STW8A2PD-E1	2.78	65	200	35	11.1	2,600 – 7,000	120	> 80



5630-series

Size: 5.6mm x 3.0mm x 0.65mm
 Lens: Flat

Part No.	U _F [VDC]	I _F [mA]	I _{Fmax.} [mA]	Flux [lm]	luminous intensity [cd]	Color Temp. / Color [K]	Viewing angle [°]	CRI
STW8Q14D	2.8	65	200	34.0	10.7	2,600 – 7,000	120	> 80
STW9Q14D	2.8	65	200	25.6	8.3	2,600 – 7,000	120	> 90
STW8Q14D-E3	2.8	65	200	36.3	11.4	2,600 – 7,000	120	> 80
STW9Q14D-E3	2.8	65	200	30.6	9.4	2,600 – 7,000	120	> 90



3528-series colored

Size: 3.5mm x 2.8mm x 0.7mm
 Lens: Flat

Part No.	U _F [VDC]	I _F [mA]	I _{Fmax.} [mA]	Flux [lm]	Color Temp./Color [nm]	Viewing angle [°]
STB0A12D	3	60	70	3.5	blau / 455	120
STG0A2PD	3.05	60	70	16	grün / 520	120
STROA12D	2.2	60	70	12	rot / 620	120

Application examples



The right product is not shown? This is just a selection from our portfolio!



Gewerbegebiet Ost 7
D-91085 Weisendorf

Tel.: +49 9135 73666-0
Fax: +49 9135 73666-60

E-Mail: info@neumueller.com
www.neumueller.com

Office North

Beimoorcamp 3
D-22926 Ahrensburg

Tel.: +49 4102 66601-0
Fax: +49 4102 66601-66

E-Mail: info@neumueller.com
www.neumueller.com