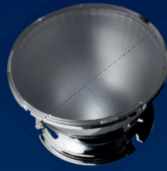


OPTICS

FOR LED-ILLUMINATION APPLICATIONS



PL50SIL



LENINA-M-DL



LENA-S-DL



KCLP1478ST



KCLP1468ST

Optics for Seoul Semiconductor-LEDs

Our partners for secondary optics complete the LED-accessories with high efficient lenses and reflectors which have been especially developed for Seoul Semiconductor-LEDs.

Those provide the opportunity to realize each application in the angle of required reflected beam in a homogeneous illumination. The range varies from 1-, 3- or array-optics in various diameters/geometries and a wide range of angels of reflected beams. In addition it is also possible from our side to develop and provide customized optical systems for very special illumination applications. The portfolio ranges from optical adjustments of existing illumination applications up to complete developments of optical units

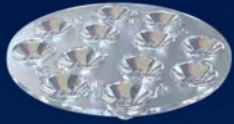
LED-Family 5630

Part No.	characteristic	angel of reflected beam	model	diameter	height	supplier	LED-Type
12750	narrow beam	10°	Stripe	28 mm	18.7 mm	carclo Optics	5630

LED-Family ZC (COB)

Part No.	characteristic	angel of reflected beam	model	diameter	height	supplier	LED-Type
KCLP1466ST	medium beam	19°	single optic	65 mm	35 mm	KHATOD LENSES FOR POWER LED	ZC6
KCLP1467ST	medium beam	22°	single optic	65 mm	35 mm		ZC6
KCLP1468ST	medium beam	26°	single optic	65 mm	35 mm		ZC6
KCLP1469ST	medium beam	30°	single optic	65 mm	35 mm		ZC6
KCLP1470ST	wide beam	40°	single optic	65 mm	35 mm		ZC6
KCLP1461ST	medium beam	26°	single optic	65 mm	35 mm		ZC12 + ZC18
KCLP1462ST	medium beam	30°	single optic	65 mm	35 mm		ZC12 + ZC18
KCLP1463ST	wide beam	36°	single optic	65 mm	35 mm		ZC12 + ZC18
KCLP1464ST	wide beam	41°	single optic	65 mm	35 mm		ZC12 + ZC18
KCLP1465ST	ultra-wide beam	ZC12: 52° ZC18: 49°	single optic	65 mm	35 mm		ZC12 ZC18
KCLP1477ST	wide beam	32°	single optic	90 mm	55 mm		ZC25 + ZC40
KCLP1478ST	wide beam	38°	single optic	90 mm	55 mm		ZC25 + ZC40
KCLP1479ST	ultra-wide beam	51°	single optic	90 mm	55 mm		ZC25 + ZC40
PL50SIL*	medium beam	ZC6: 15° ZC12: 27° ZC18: 27°	single optic	50 mm	21.1 mm		ZC6 ZC12 ZC18
LENA-S-DL	narrow beam	12°	single optic	111 mm	85.4 mm	LEDIL A WORLD OF INNOVATION	ZC12 + ZC18
LENA-M-DL	medium beam	22°	single optic	111 mm	85.4 mm		ZC12 + ZC18
LENA-W-DL	medium beam	48°	single optic	111 mm	85.4 mm		ZC12 + ZC18
MIRELLA-50-S-DL	narrow beam	21°	single optic	49.9 mm	23.9 mm		ZC6
MIRELLA-50-M-DL	medium beam	32°	single optic	49.9 mm	23.9 mm		ZC6
MIRELLA-50-W-DL	wide beam	48°	single optic	49.9 mm	23.9 mm		ZC6
LENINA-S-DL	narrow beam	30°	single optic	74 mm	48.4 mm		ZC25 + ZC40
LENINA-M-DL	medium beam	44°	single optic	74 mm	48.4 mm		ZC25 + ZC40
LENINA-W-DL	wide beam	60°	single optic	74 mm	48.4 mm		ZC25 + ZC40

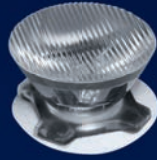
*Silicone optic, UV-resistant, no yellowing effect



KEPL153210



KEPL155110



HEIDI-O



EMILY-SS



10774

LED-Family Z5M / Z5M1

Part No.	characteristic	angel of reflected beam	model	diameter	height	supplier
10507	narrow beam	18,5°	triple optic	20 mm	6 mm (+1.5 mm pitch)	carclo Optics
10508	medium beam	28,1°	triple optic	20 mm	6 mm (+1.5 mm pitch)	
10509	wide beam	37,2°	triple optic	20 mm	6 mm (+1.5 mm pitch)	
10510	elliptical beam	44,5° x 16,2°	triple optic	20 mm	6 mm (+1.5mm pitch)	
10412	narrow beam	21,9°	single optic	10 x 10 mm	6 mm (+1.5 mm pitch)	
10417	narrow beam	22,2°	single optic	10 x 10 mm	6 mm (+1.5 mm pitch)	
10413	medium beam	28,1°	single optic	10 x 10 mm	6 mm (+1.5 mm pitch)	
10414	wide beam	41,2°	single optic	10 x 10 mm	6 mm (+1.5 mm pitch)	
10415	elliptical beam	43,3° x 22,1°	single optic	10 x 10 mm	6 mm (+1.5 mm pitch)	
10770*	narrow beam	18,°	single optic	12.5 x 12.5 mm	6 mm	
10772*	medium beam	26,8°	single optic	12.5 x 12.5 mm	6 mm	
10773*	wide beam	40,6°	single optic	12.5 x 12.5 mm	6 mm	
10774*	elliptical beam	46° x 20°	single optic	12.5 x 12.5 mm	6 mm	
HEIDI-RS	narrow beam	11°	single optic	21.6 mm	11.70 mm	
HEIDI-SS	narrow beam	14°	single optic	21.6 mm	11.70 mm	
HEIDI-M	medium beam	29°	single optic	21.6 mm	11.70 mm	
HEIDI-O	elliptical beam	53° x 11°	single optic	21.6 mm	11.70 mm	
HEIDI-W	wide beam	32°	single optic	21.6 mm	11.70 mm	
EMILY-SS	narrow beam	10°	single optic	26 mm	15.15 mm	
EMILY-M	medium beam	18°	single optic	26 mm	15.15 mm	
EMILY-M2	medium beam	28°	single optic	26 mm	15.15 mm	
EMILY-W	wide beam	40°	single optic	26 mm	14.90 mm	
EMILY-O	elliptical beam	44° x 10°	single optic	26 mm	15.15 mm	
ANNA-40-6-S	narrow beam	15°	array with 6 lenses	40 mm	10.70 mm	KHATOD® LENSES FOR POWER LED
ANNA-40-6-M	medium beam	23°	array with 6 lenses	40 mm	10.70 mm	
KEPL153210	narrow beam	17°	array with 12 lenses	101.6 mm	11.41 mm	
KEPL153220	medium beam	23°	array with 12 lenses	101.6 mm	11.41 mm	
KEPL153236	wide beam	34°	array with 12 lenses	101.6 mm	11.41 mm	
KEPL153260	ultra-wide beam	56°	array with 12 lenses	101.6 mm	11.41 mm	
KEPL142310	narrow beam	17°	array with 7 lenses	89 mm	11.41 mm	
KEPL142320	medium beam	23°	array with 7 lenses	89 mm	11.41 mm	
KEPL142336	wide beam	34°	array with 7 lenses	89 mm	11.41 mm	
KEPL142360	ultra-wide beam	56°	array with 7 lenses	89 mm	11.41 mm	
KEPL142410	narrow beam	17°	array with 9 lenses	89 mm	11.41 mm	
KEPL142420	medium beam	23°	array with 9 lenses	89 mm	11.41 mm	
KEPL142436	wide beam	34°	array with 9 lenses	89 mm	11.41 mm	
KEPL142460	ultra-wide beam	56°	array with 9 lenses	89 mm	11.41 mm	
KEPL155110	narrow beam	17°	array with 9 lenses	83.82 x 83.82 mm	11.41 mm	
KEPL155120	medium beam	23°	array with 9 lenses	83.82 x 83.82 mm	11.41 mm	
KEPL155136	wide beam	34°	array with 9 lenses	83.82 x 83.82 mm	11.41 mm	
KEPL155160	ultra-wide beam	56°	array with 9 lenses	83.82 x 83.82 mm	11.41 mm	

* IP 66

Neumüller

Elektronik GmbH

custom-fit Solutions



Headquarter

Gewerbegebiet Ost 7
D-91085 Weisendorf
Tel. +49 9135 73666-0
Fax +49 9135 73666-60
info@neumueller.com
www.neumueller.com

Opto Competence Centre

Beimoorkamp 3
D-22926 Ahrensburg
Tel. +49 4102 66601-0
Fax +49 4102 66601-66
opto@neumueller.com
www.neumueller.com